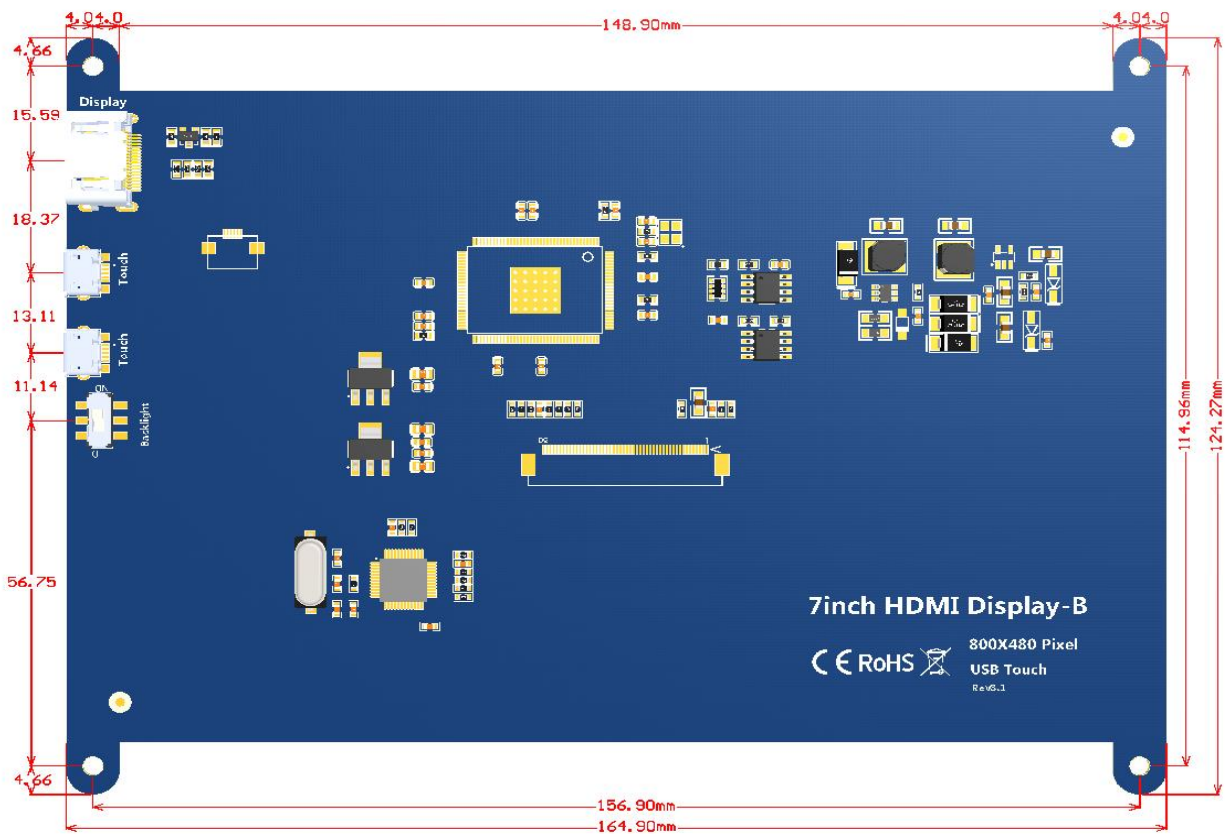


Product Features	
5"standard display, 800x480 resolution, maximum HDMI resolution 1920X1080 is supported	
Capacitive touch screen, support 5 point touch maximum	
Built-in OSD menu adjustment function (adjustable Contrast/ Brightness/Saturation, etc.)	
It is compatible with mainstream mini PC such as Raspberry Pi, BB Black, Banana Pi	
It can also be used as a general-purpose HDMI display, connecting computers, TV boxes, Microsoft Xbox360, SONY PS4, Nintendo Switch and so on	
Used as a Raspberry Pi display that supports Raspbian, Ubuntu, Kodi, Win10 IOT, single-touch, free drive	
Work as a PC monitor, support Win7, Win8, Win10 system 5 point touch (XP and older version system: single-point touch), free drive	
Support HDMI audio output	
CE, RoHS certification	
Main Parameters	
Name	Description
SKU	MPI7001
Size	7.0 (inch)
Resolution	800*480(dots)
Touch	5 point capacitive touch
Active Area	153.84*85.63(mm)
Dimensions	164.9*124.27 (mm)
Package Size	211*150*53 (mm)
Power Dissipation	0.74A*5V
Rough Weight(Package containing)	405 (g)
Interface Definition	
① Backlight Power switch: Controls the backlight turned on and off to save power.	
②&③ USB Touch / power supply connector: For power supply and touch output, the functions of the both are the same, can just use one of them.	
④ HDMI interface: For connecting motherboard and LCD monitor to HDMI transmission.	

Product Size



Product Pictures

